

# PILLAR

## MARK 20

*Cycle-Dyne*

### Standard Features:

- Direct modern replacement for vacuum tube high frequency generators.
- MOSFET transistor modules.
- 95% conversion efficiency.
- Wide matching range capability.
- Full compliment of direct metering for power supply operating conditions.
- Single main control board.
- NEC and NFPA79 wiring codes.
- Isolation output transformer.
- Series tuned output circuit.
- Sealed enclosures requiring no external air for cooling.
- Single side access for easy installation of floor models.
- CE certification.

**Transistorized RF Power Supplies**

**50 to 450kHz**



**2.5-5 kW**



**7.5-20 kW**

### World Headquarters

21905 Gateway Road • Brookfield, WI 53045  
Toll Free: (800) 558-7733 • (262) 317-5300 • Fax: (262) 317-5353  
e-mail: sales@pillar.com website: www.pillar.com

CERTIFIED  
ISO 9001  
QS 9000TE

### Operator & System Interface:

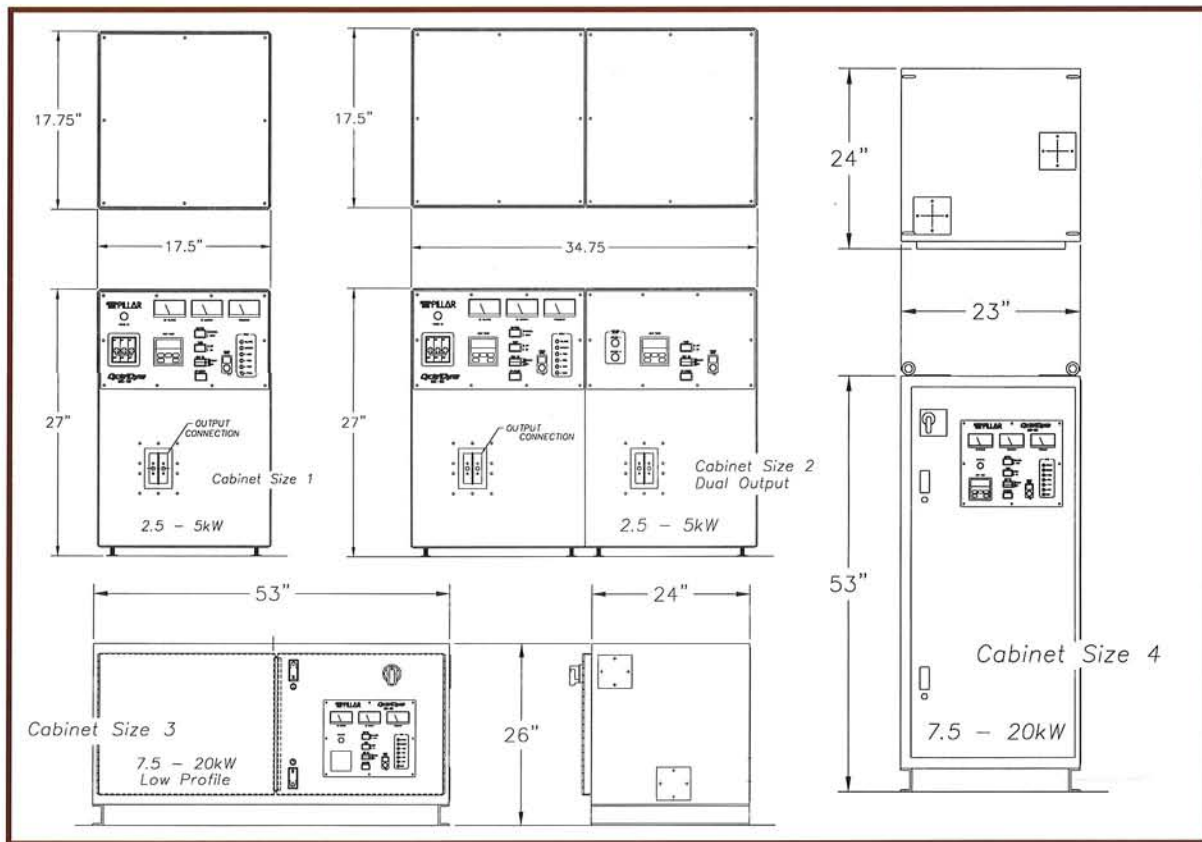
- Illuminated heat on and ready push-button.
- Heat off & reset push-button.
- Digital multirange heat cycle timer with enable switch.
- Local/Remote control selector switch.
- Full analog metering for voltage, current and frequency.
- 10 turn power control potentiometer.
- Diagnostic indicators for voltage, current, frequency, water inlet temperature and water differential pressure.
- Main input circuit breaker.
- Centrally located terminal block for customer interface connections.
- Internal load matching components.

### Power Supply Specifications:

- Power circuit is direct fired, series tuned, fundamental frequency output utilizing MOSFET power devices for switching.
- Constant input power factor of .95 or better.
- Minimal power output level is 1% of rated power output.
- All kilowatt sizes are provided from the factory in current control.
- Output regulation accuracy is  $\pm 1/2\%$  with  $\pm 10\%$  change in incoming line.
- Input line to load conversion efficiency of 95%.
- Input power requires 3 phase at rated voltage, 50 or 60 hertz.
- 95 degree maximum inlet water temperature.
- 30 psi minimum differential water pressure with differential switch protection.
- NPT thread connections on water inlet/outlet.
- Constant resonant frequency tracking throughout the heating cycle.
- CE certification standard.

### Optional Features:

- Remote operator's panel. (local and remote)
- 4-20mA signal interface.
- Remote heat stations.
- Ground fault detection circuitry.
- Analog data output terminal to monitor internal functions.
- Digital metering with alarm outputs.
- Single and multistage timer circuitry for ramp and soak capabilities.
- Automatic line speed compensation.
- Dual-output, alternate station operation.
- Low profile enclosures available in 7.5 thru 20kW models.
- Quick disconnect induction work coil assemblies.
- Induction coil flexible lead assemblies.
- Process fixturing, tooling and turnkey systems available.
- Preventive maintenance and extended warranty programs available.



MK-20 Sizing and Operational Range						
kW	Cabinet Size	kVA	Line Voltage	Line Amps	Water GPM	Weight LBS
2.5	1	3.5	240	9	1.0	110
5	1-2	6.5	240	18	1.5	125
7.5	3-4	9.8	240	27	2.0	375
10	3-4	13	240	36	2.5	395
15	3-4	19.5	240	54	3.0	440
20	3-4	26	240	72	3.5	460

# MARK 20

Transistorized RF Power Supplies

